

**LAST MINUTE
PRELIMS
RECKONER
2023**

WATER BODIES OF THE WORLD

IMPORTANT WATER BODIES OF THE WORLD

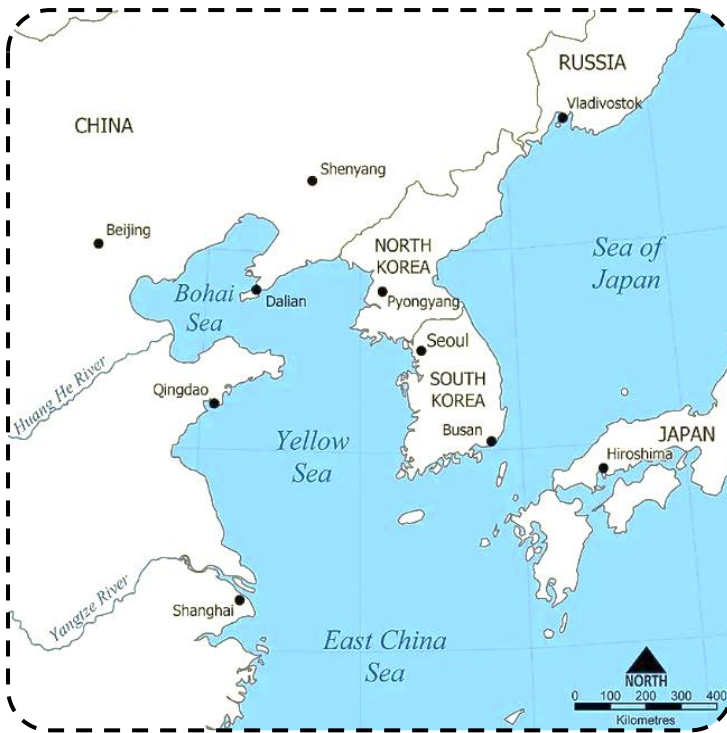
I. SEA OF OKHOTSK & SEA OF JAPAN



IDENTIFY ON THE MAP

- ✓ **Sea of Okhotsk** is surrounded by the Kamchatka Peninsula of **Russia** in the E; by the **Kuril Islands** in the SE; **Japan's** Hokkaido island in the S-SW; **Sakhalin Island** SW. On either side of Sakhalin Island, it is connected with the Sea of Japan via the La Pérouse Strait in the S and via the Gulf of Tartary and the Sakhalin Gulf in the W. Significant rivers include Amur, Gizhiga, Okhota, Penzhina, Tugur, & Uda.
- ✓ **Sea of Japan** is bounded by **Russia** and **Sakhalin Island** in the N, by **North Korea** in the W, **South Korea** in the SW, and by the **Japanese archipelago** (Hokkaidō, Honshū & Kyūshū islands) in the E & S. It is connected with the East China Sea in the S via the Tsushima and Korea straits and with the Okhotsk Sea in the N by the La Perouse and Tatar straits. In the E, it is connected with the Inland Sea of Japan via the Kanmon Strait and the Pacific Ocean by the Tsugaru Strait. Major basins include Japan, Yamato, Tsushima. It serves as a meeting point of cold & warm water currents.

2. YELLOW SEA



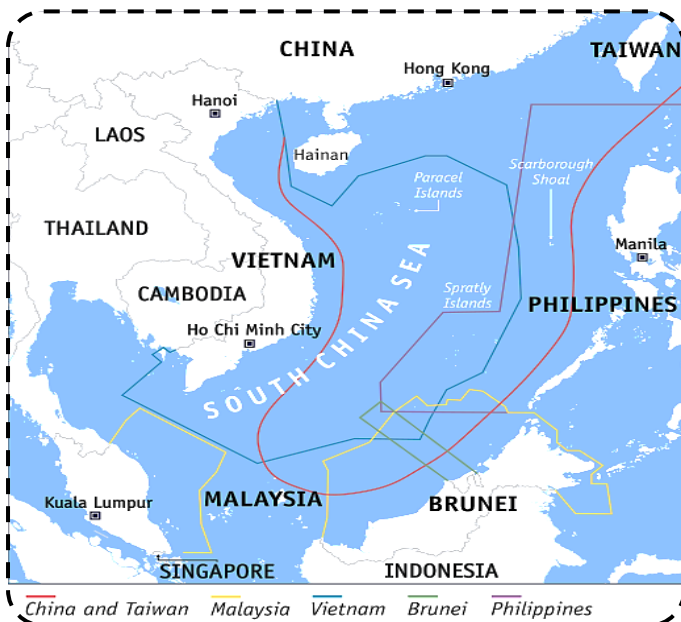
- ✓ Yellow Sea is positioned to the north of the East China Sea. It is bordered by Mainland **China** in the north and west and by **North Korea** and **South Korea** in the east.
- ✓ Some of the significant rivers that drain into the sea include Yellow, Yangtze, Huang He, Yalu, Chongchon.
- ✓ Yellow Sea experiences a temperate monsoon climate. The sea has one of the world's largest portions of continental shelf submerged in water.

3. EAST CHINA SEA



- ✓ It is a marginal sea of the Pacific Ocean and is bordered by **South Korea, Japan, the Republic of China (Taiwan)** and **the People's Republic of China**.
- ✓ It is connected to the South China Sea via the Taiwan Strait and connected to the Sea of Japan via the Korea Strait.
- ✓ **Island of Senkaku or Diaoyu** is located in the East China Sea and is contested between China and Japan.
- ✓ The East China Sea and the South China Sea together form the **China Sea**.
- ✓ Weather is dominated by the monsoon wind system.

4. SOUTH CHINA SEA



- ✓ **South China Sea** is bounded on the west and north by **China**, on the east by **Taiwan** and **Philippines**, on the S & SE by **Borneo**, southern limit of the **Gulf of Thailand**, and the east coast of the **Malay Peninsula**.
- ✓ **Taiwan Strait** connects it to East China Sea, **Luzon Strait** (b/w Taiwan & Philippines) connects it to the Pacific Ocean, **Strait of Malacca** connects it to the Indian Ocean.
- ✓ Rivers such as Mekong, Red and Hsi drains into the South China Sea.

- ✓ **South China Sea Disputed Islands** include the: **Paracel Islands** (claimed by China, Taiwan & Vietnam), **Spratly Islands** (claimed by China, Taiwan, Vietnam, Brunei & Philippines), **Scarborough Shoal** (claimed by Philippines, China & Taiwan).
- ✓ China has been converting uninhabited islets into artificial islets to bring it under UNCLOS (examples would include Haven Reef, Johnson South Reef and Fiery Cross Reef) and also has established airstrips on Parcel and Spratly Islands.

5. OCEANS & SEAS IN SOUTHEAST ASIA



6. OCEANS & SEAS AROUND AUSTRALIA



7. PERSIAN GULF



IDENTIFY ON THE MAP

- ✓ Bound by Iran, Iraq, Kuwait, Saudi Arabia, Bahrain, Qatar, UAE and Oman.
- ✓ **Strait of Hormuz** connects it to Gulf of Oman and the Indian Ocean.
- ✓ **Qeshm Island** is the largest island.
- ✓ **Tigris, Euphrates & Kārūn** rivers drains into it.

8. RED SEA



IDENTIFY ON THE MAP

- ✓ Red Sea is connected to the Arabian Sea & the Indian Ocean to the south through the **Gulf of Aden** and the narrow **Strait of Bab el Mandeb**.
- ✓ Red Sea Territories include **Yemen, Saudi Arabi, Jordan, Israel, Egypt, Sudan, Eritrea, Djibouti, Somalia**.
- ✓ Sinai Peninsula bifurcates Red Sea into the **Gulf of Aqaba** (Jordan river drains into it) and the **Gulf of Suez**. **Suez Canal** connects the gulf to the Mediterranean Sea.
- ✓ Notable Islands: **Farasan, Dahlak Archipelago, Tiran and Shadwan** islands.
- ✓ This semi-enclosed inlet of Indian Ocean is the **world's northernmost tropical sea**.

9. CASPIAN SEA



- ✓ **5 countries** border Caspian Sea: **Iran, Turkmenistan, Kazakhstan, Azerbaijan and Russia.**
- ✓ Significant rivers that drain into this endorheic basin are **Volga, Ural and Kura.**
- ✓ The Caspian Sea is the Earth's largest inland body of water.
- ✓ Caspian littoral states signed in 2003 a **(Tehran) Framework Convention** for the protection of the marine environment.
- ✓ **Caucasus Mountains** to the west and the **Steppes** of Central Asia to the east.

10. ARAL SEA



DID YOU KNOW ?

- ✓ Aral Sea, is a once-large saline lake in Central Asia bound between **Kazakhstan** and **Uzbekistan.**
- ✓ 2 main river inlets into the Caspian Sea include **Syr Darya and Amu Darya.**
- ✓ In 1960s Soviet Union diverted the water from the two rivers to irrigate the cotton fields. By 2004 only 25% of the Aral Sea's water surface was left and the salinity level also increased by nearly ten times.

11. BLACK SEA





DID YOU KNOW ?

- ✓ It is bound by **6 countries: Ukraine, Russia, Georgia, Turkey, Bulgaria and Romania**. It is bound to the west by the Balkan Peninsula in South-eastern Europe, to the east by the Caucasus, north by East European Plains, and south by Anatolia of Western Asia.
- ✓ *Sea of Azov → Kerch Strait → Black Sea → Bosphorus Strait (Istanbul) → Sea of Marmara → Dardanelles Strait → Aegean Sea → Sea of Crete → Mediterranean Sea.*
- ✓ **Rivers that drain into Black Sea:** Danube, Dnieper, Don, Sakarya, Southern Bug and Dniester.
- ✓ The nature of Black Sea water is **anoxic** due to eutrophication. It is also a **meromictic basin**, which means the movement of water between the lower and upper layers of the sea is a rare phenomenon.

12. MEDITERRANEAN SEA



Countries that border the Mediterranean Sea

- ✓ **Bordering Countries (21):** Albania, Algeria, Bosnia and Herzegovina, Croatia, Cyprus, Egypt, France, Greece, Israel, Italy, Lebanon, Libya, Malta, Monaco, Montenegro, Morocco, Slovenia, Spain, Syria, Tunisia, and Turkey.
- ✓ **Rivers Draining into Mediterranean Sea:** Ebro, Rhone, Po, Nile, Tiber, etc.
- ✓ **Western Submarine Basins:** Alborán Basin, Algerian Basin, and Tyrrhenian Basin | **Eastern Submarine Basins:** Ionian Basin and Levantine Basin.
- ✓ Cities like Alexandria, Rome, Venice, Beirut, Athens, Marseille, Tel Aviv, etc are located along the Sea.



- ✓ **Major subdivisions of the Mediterranean Sea** include the Aegean Sea, Adriatic Sea, Alborán Sea, Ionian Sea, Tyrrhenian Sea, Ligurian Sea, Balearic Sea, and Strait of Gibraltar. In addition, there are some **other seas** such as the Sea of Sardinia, Sea of Sicily, Libyan Sea, Cilician Sea, and the Levantine Sea. The **Aegean Sea is further subdivided into** the Sea of Crete, the Thracian Sea, the Myrtoan Sea, and the Icarian Sea.
- ✓ Some of the large **Mediterranean Islands** include Corsica, Crete, Cyprus, Chios, Euboea, Lesbos, Mallorca, Rhodes, Sicily, and Sardinia.

13. NORTH SEA



- ✓ North sea is bordered by the island of **Great Britain** to the S & SW, the **Orkney and Shetland** islands to the NW, **Norway** to the NE, **Denmark** to E, **Germany** and the **Netherlands** to the SE, and **Belgium & France** to the S.
- ✓ It is connected to the Atlantic by the **Strait of Dover** and the **English Channel**.
- ✓ **Skagerrak**, an extension of the North Sea connects it to Baltic seas via the **Kattegat** and the **Danish straits**.
- ✓ Rivers **Elbe** and the **Rhine - Meuse** drains into North Sea.

14. BALTIC SEA



DID YOU KNOW ?

- ✓ It is enclosed by Denmark, Estonia, Finland, Germany, Latvia, Lithuania, Poland, Russia, Sweden.
- ✓ Baltic Sea is subdivided into several regions including the Gulf of Bothnia, the Bay of Bothnia, the Gulf of Finland, the Gulf of Riga and the Bay of Gdańsk.
- ✓ The Baltic Sea is connected by artificial waterways to the White Sea via the **White Sea-Baltic Canal** and to the German Bight of the North Sea via the **Kiel Canal**.

15. NORWEGIAN SEA



DID YOU KNOW ?

- ✓ It is a marginal sea of the Arctic Ocean.
- ✓ It is situated along the NW of Norway and b/w Greenland Sea and North Sea.
- ✓ Barents Sea is located to the NE of the Norwegian Sea.
- ✓ Jan Mayen Ridge separates it from the Greenland Sea.
- ✓ Due to the warm North Atlantic Current the sea is ice free throughout the year.
- ✓ Lofoten Islands is the richest fishing site in Europe.

16. CARIBBEAN SEA

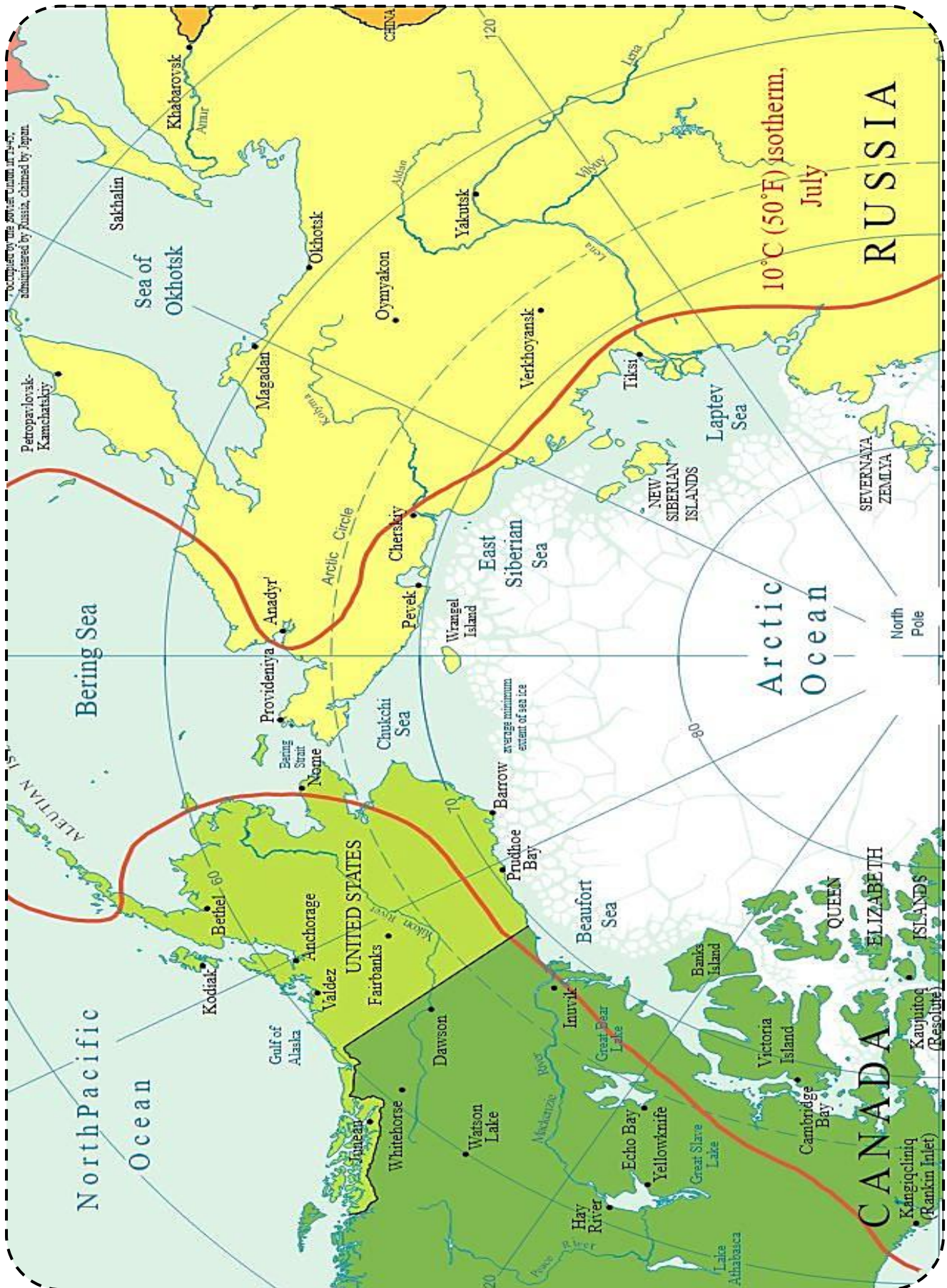


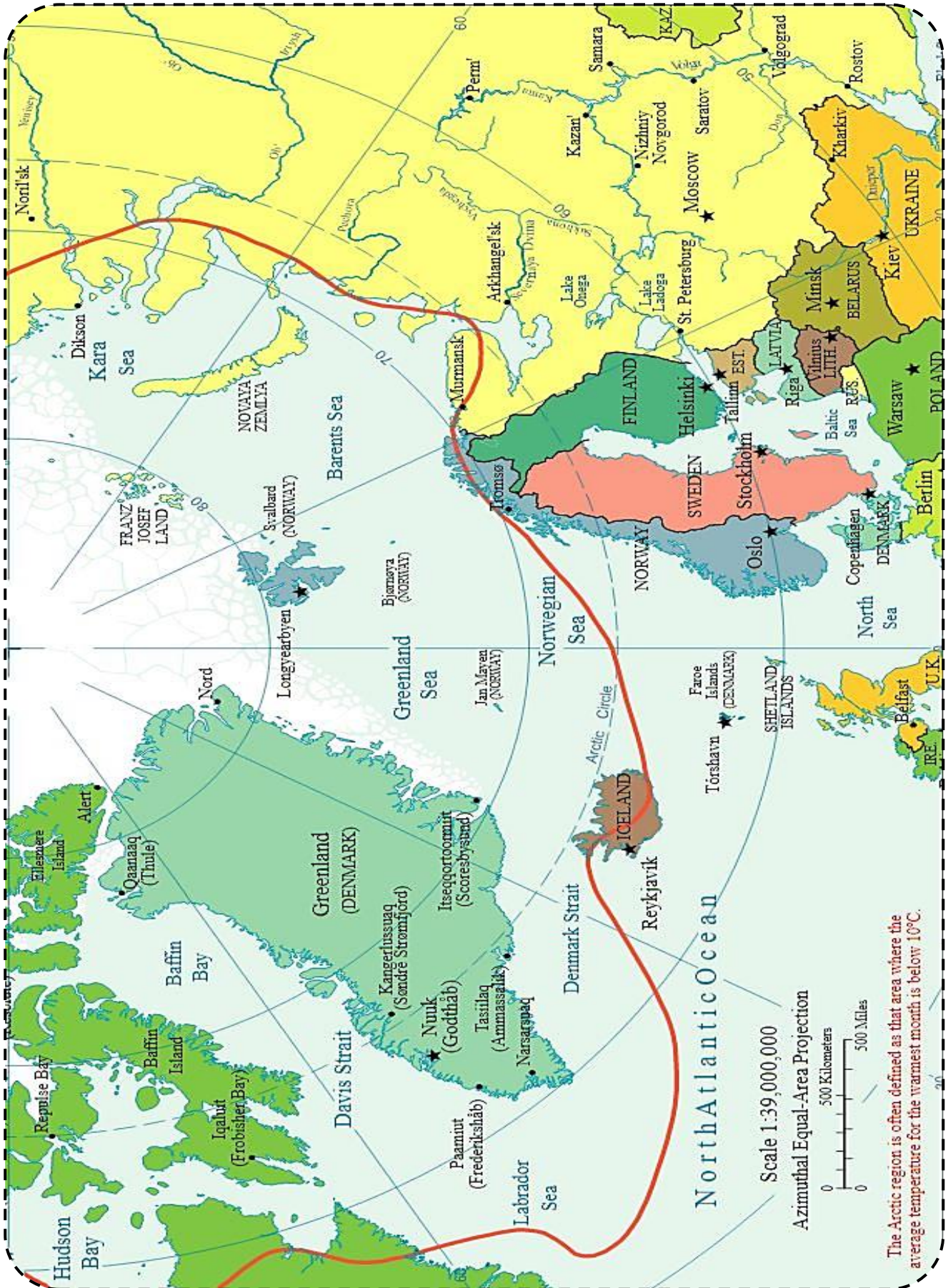
17. GULF OF MEXICO



- ✓ It is the world's largest gulf.
- ✓ It is bound by US, Mexico and Cuba.
- ✓ It is connected to the Caribbean Sea via **Yucatán Channel** (b/w Cuba & Mexico); and to Atlantic via the **Straits of Florida** (b/w Cuba and US).
- ✓ Warmer temp due to Gulf Stream Current and therefore hurricanes.

18. ARCTIC OCEAN





19. SOUTHERN OCEAN & ANTARCTICA

